



# Singing & Signing Resource Pack

## Down By the Riverside

[www.aamedia.org.uk](http://www.aamedia.org.uk)



# Down By the Riverside - Learning Guide

**Range:** A Seventh (7 notes- Bb to Ab)

**Parts:** 1

**You should always read the Singing and Signing Resources Guide in your downloaded resource pack before you start teaching this song to your group. It's important that as the leader you learn the signs first, especially if you're new to signing.**

## Context

Down By the Riverside is a lively take on the traditional spiritual song which is often used as a protest song. Our groups decided to re-write the 2nd and 3rd verses to reflect on how we can be kind to each other. This song is a great introduction to song writing for a group, as you can easily change the words to one or two of the verses.

The song is quite a fast one so care will be needed when learning both the signs and the tune. When practicing the song, we recommend using Speedshifter (see our singing and signing guide for more information) to slow the track down and speed it up slowly over time. There are also some big phrases that you need to sing, so make sure you warm-up with a good breathing warm-up!

You can watch a full version of this song being performed by one of our leaders [here](#). We've also created [a teaching video of the full song](#) for you to use alongside this resource pack.

## Structure

1. There is 4-bar introduction
2. The song has a verse - chorus structure.
  - Chorus
  - Verse 1
  - Chorus
  - Verse 2
  - Chorus
  - Verse 3
  - Chorus
  - Verse 1
  - Chorus
3. There are no breaks between the verse and chorus

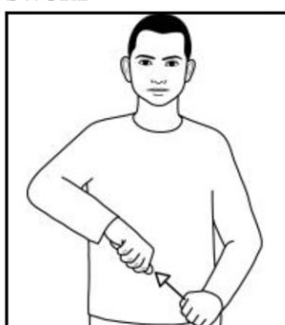
## Down By the Riverside - Sign Sheet - Verse 1

### TO PUT



Working loosely bunched hand (palm down, pointing forward) moves forwards in small arc to put down imaginary object.  
*Otherwise use appropriate hand shape to mime appropriate action.*

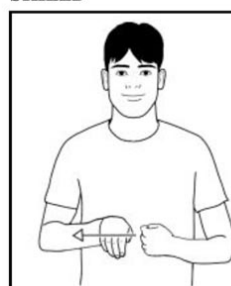
### SWORD



Mime drawing sword from scabbard.

Diagrams, text and descriptions © SIGNALONG

### SHIELD



Supporting fist (palm back, pointing in) is held against body; working cupped hand (palm back, pointing down) held at the supporting side in front of supporting hand. Working hand moves to working side.

Diagrams, text and descriptions © SIGNALONG

I'm gonna lay down

My sword

And shield

### DOWN



Working index hand (palm back, pointing down) moves downwards.

### RIVER



"N" hands (palms in, pointing forward/down) move forwards while weaving from side to side.

Down

By the riverside

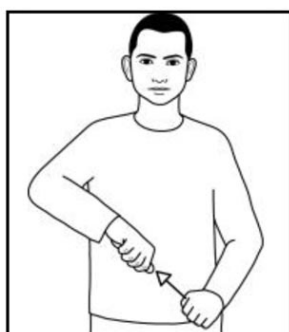
X3

### TO PUT



Working loosely bunched hand (palm down, pointing forward) moves forwards in small arc to put down imaginary object.  
*Otherwise use appropriate hand shape to mime appropriate action.*

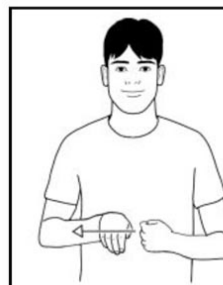
### SWORD



Mime drawing sword from scabbard.

Diagrams, text and descriptions © SIGNALONG

### SHIELD







Supporting fist (palm back, pointing in) is held against body; working cupped hand (palm back, pointing down) held at the supporting side in front of supporting hand. Working hand moves to working side.

Diagrams, text and descriptions © SIGNALONG





I'm gonna lay down




My sword



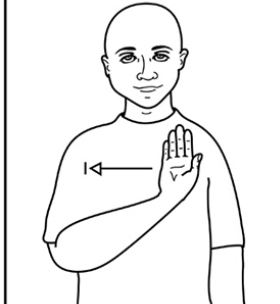

And shield



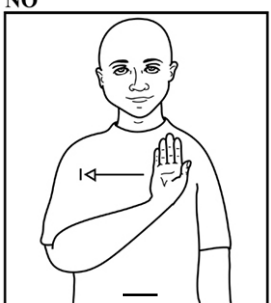
<b>DOWN</b>  Working index hand (palm back, pointing down) moves downwards.	<b>RIVER</b>  "N" hands (palms in, pointing forward/down) move forwards while weaving from side to side.	<b>TO FIGHT</b>  Little finger hands (palms back, pointing in/up) move in to tap together twice.	<b>NO</b>  Working flat hand (palm forward, pointing up) moves sharply to working side.
<u>Down</u>	By the <u>river</u> side	I'm gonna study <u>war</u>	<u>No</u> more

### Down By the Riverside - Sign Sheet - Chorus

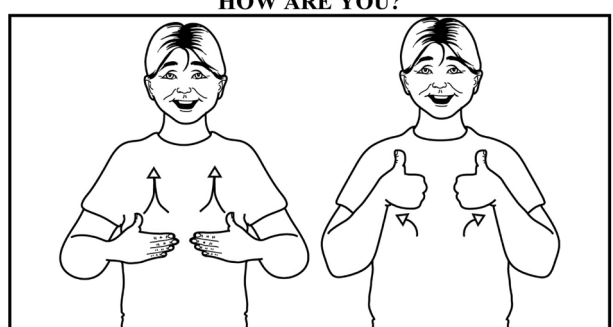
<b>NO</b>  Working flat hand (palm forward, pointing up) moves sharply to working side.	<b>TO FIGHT</b>  Little finger hands (palms back, pointing in/up) move in to tap together twice.	<b>NO</b>  Working flat hand (palm forward, pointing up) moves sharply to working side.	<b>TO FIGHT</b>  Little finger hands (palms back, pointing in/up) move in to tap together twice.
I <u>ain't</u>	Gonna study <u>war</u> no more	<u>Ain't</u>	gonna study <u>war</u> no more

<b>TO LEARN</b>  Working parallel flat hand (palm up, pointing forward) moves to working side of forehead closing to bunched hand (palm back, pointing up).	<b>TO FIGHT</b>  Little finger hands (palms back, pointing in/up) move in to tap together twice.	<b>NO</b>  Working flat hand (palm forward, pointing up) moves sharply to working side.
I <u>ain't</u> gonna study	<u>war</u>	<u>no</u> more

<p><b>NO</b></p>  <p>Working flat hand (palm forward, pointing up) moves sharply to working side.</p>	<p><b>TO FIGHT</b></p>  <p>Little finger hands (palms back, pointing in/up) move in to tap together twice.</p>	<p><b>NO</b></p>  <p>Working flat hand (palm forward, pointing up) moves sharply to working side.</p>	<p><b>TO FIGHT</b></p>  <p>Little finger hands (palms back, pointing in/up) move in to tap together twice.</p>
I <u>ain't</u>	Gonna study <u>war</u> no more	<u>Ain't</u>	gonna study <u>war</u> no more

<p><b>TO LEARN</b></p>  <p>Working parallel flat hand (palm up, pointing forward) moves to working side of forehead closing to bunched hand (palm back, pointing up).</p>	<p><b>TO FIGHT</b></p>  <p>Little finger hands (palms back, pointing in/up) move in to tap together twice.</p>	<p><b>NO</b></p>  <p>Working flat hand (palm forward, pointing up) moves sharply to working side.</p>
I <u>ain't</u> gonna study	<u>war</u>	<u>no</u> more

## Down By the Riverside - Sign Sheet - Verse 2

<p>Shake a friends' hand</p>	<p><b>HOW ARE YOU?</b></p>  <p>Flat hands (palms back, pointing in) thumbs extended, move up body and forwards; fingers close to thumb hands to sign "good".</p>
I'm gonna <u>shake hands</u>	Say <u>how are you?</u>



**DOWN**

Working index hand (palm back, pointing down) moves downwards.

Down

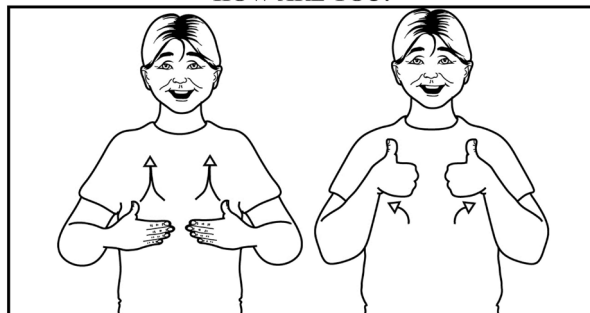
**RIVER**

"N" hands (palms in, pointing forward/down) move forwards while weaving from side to side.

By the riverside

X3

Shake a friends' hand

**HOW ARE YOU?**

Flat hands (palms back, pointing in) thumbs extended, move up body and forwards; fingers close to thumb hands to sign "good".

I'm gonna shake hands

Say how are you?

**DOWN**

Working index hand (palm back, pointing down) moves downwards.

Down

**RIVER**

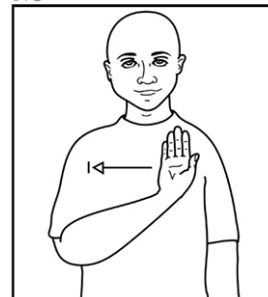
"N" hands (palms in, pointing forward/down) move forwards while weaving from side to side.

By the riverside

**TO FIGHT**

Little finger hands (palms back, pointing in/up) move in to tap together twice.

I'm gonna study war

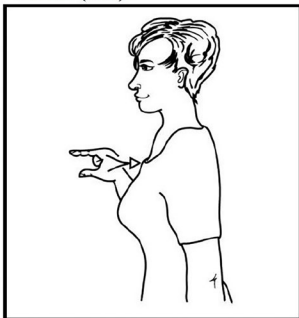
**NO**

Working flat hand (palm forward, pointing up) moves sharply to working side.

No more

## Down By the Riverside - Sign Sheet - Verse 3

### PICK (TO)



Working open pinched hand (palm forward, pointing up) moves back to signer, becoming closed pinched hand.

*Directional sign.*

I'm gonna pick

### FLOWER



Working bunched hand (palm back, pointing up) held under the nose, waves from side to side.

Flowers and daffodils

### DOWN



Working index hand (palm back, pointing down) moves downwards.

Down

### RIVER

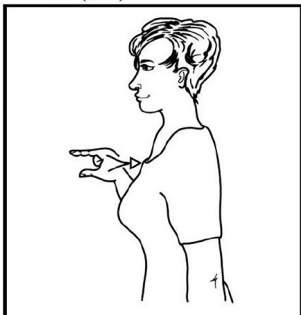


"N" hands (palms in, pointing forward/down) move forwards while weaving from side to side.

By the riverside

X3

### PICK (TO)



Working open pinched hand (palm forward, pointing up) moves back to signer, becoming closed pinched hand.

*Directional sign.*





I'm gonna pick

### FLOWER



Working bunched hand (palm back, pointing up) held under the nose, waves from side to side.

Flowers and daffodils

<p><b>DOWN</b></p>  <p>Working index hand (palm back, pointing down) moves downwards.</p>	<p><b>RIVER</b></p>  <p>"N" hands (palms in, pointing forward/down) move forwards while weaving from side to side.</p>	<p><b>TO FIGHT</b></p>  <p>Little finger hands (palms back, pointing in/up) move in to tap together twice.</p>	<p><b>NO</b></p>  <p>Working flat hand (palm forward, pointing up) moves sharply to working side.</p>
<u>Down</u>	By the <u>ri</u> verside	I'm gonna study <u>war</u>	<u>No</u> more